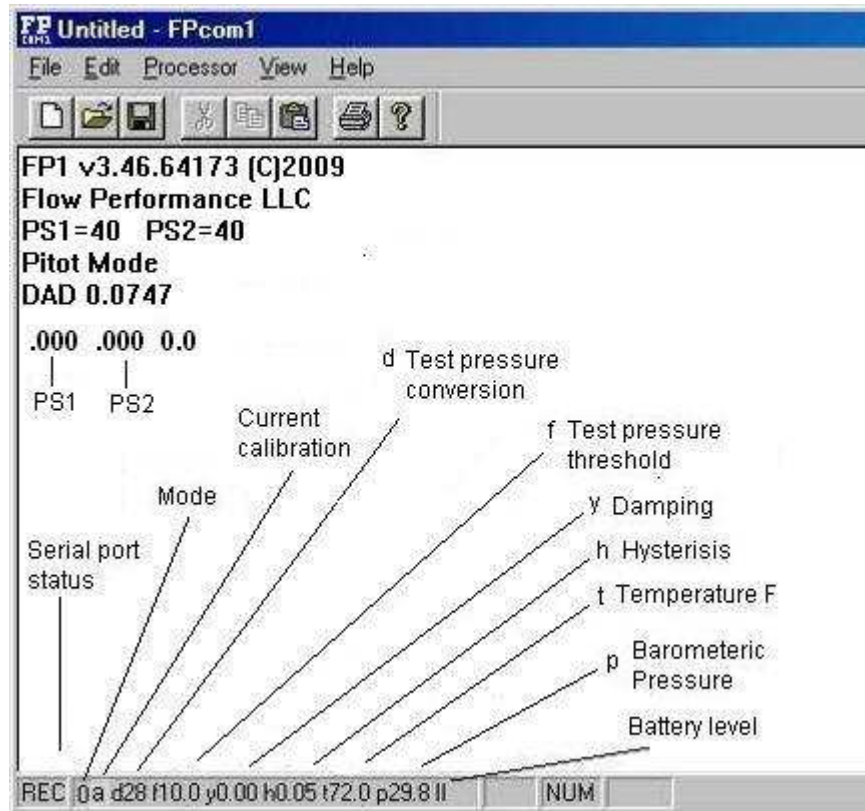


FPcom General Information

FPcom for desktop and laptop PCs is basically a word processor that allows the FP1 to enter text through the serial port. If you are familiar with NotePad or WordPad, you should have no problem operating FPcom.

FPcom runs on PCs running Windows 95 and later. Your PC will need at least one free serial port or a USB port with a USB to serial port adapter that is compatible with your computer.



When there is less than .1"wc pressure applied to PS1 (Pressure Sensor 1) the first two columns of numbers in the readout assume a manometer mode for both PS1 and PS2. This shows the zero state of these two sensors so that the user can determine if the sensors need to be zeroed.

A **Status Bar** at the bottom of the screen shows the current state and values of several FP1 parameters.

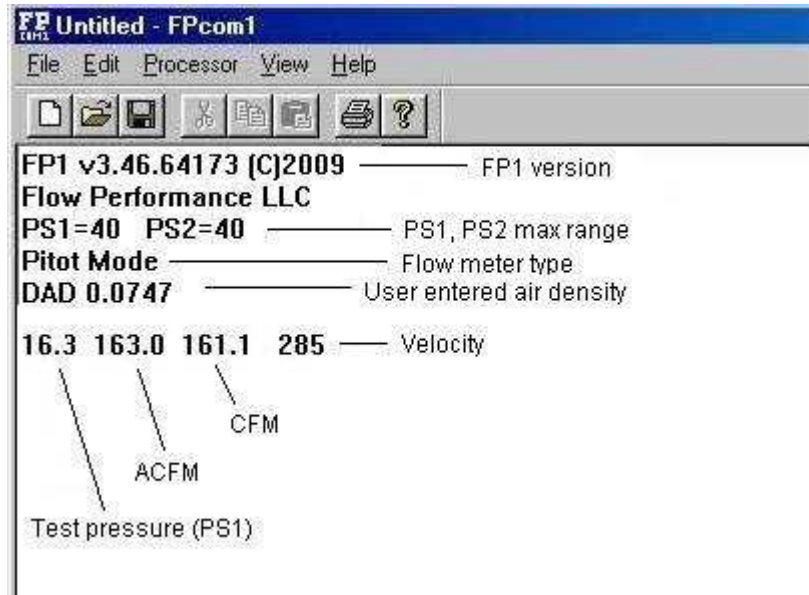
Serial Port Status indicates the status of the I/O Control serial port. REC indicates that the port is on and has received some data from the FP1. ON indicates that the port is on but has not yet received any data from the FP1. OFF indicates that the serial port is off, and that the FP1 has been turned off.

Battery Level indicates the power level of the FP1 battery. Three bars (III) indicate a strong battery, one bar indicates a weak battery. When the battery needs to be replaced, the bars will be replaced by "BAT". If the battery becomes too weak to power the FP1 safely, the FP1 will report "BATTERY DEAD", and FPcom will turn off the serial port, which will turn off the FP1.

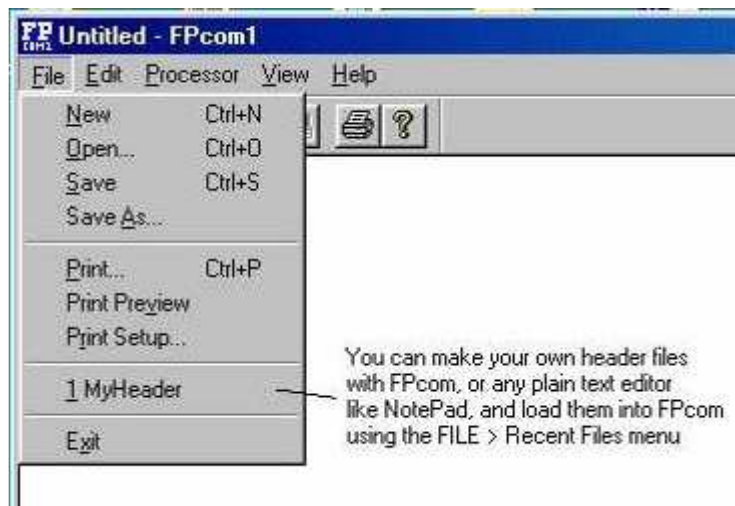
If the battery level indicates BAT, the FP1 will not enter sleep mode, but instead will turn itself off. This is because the FP1 cannot monitor battery level in sleep mode.

Flow Performance FPcom

FPcom General Information



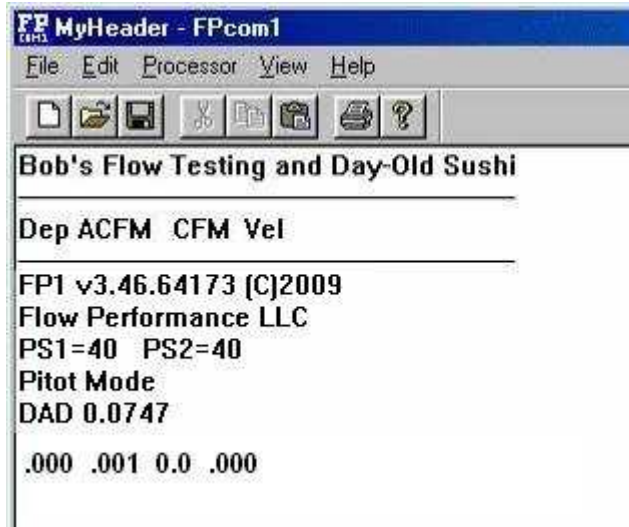
When more than .1”wc pressure is applied to PS1, the FP1 will begin to calculate flow rates and velocity according to the pressure readings taken from PS1 and PS2 in modes 0 through 2. In mode 3, only the manometer values are displayed for PS1 and PS2.



Make sure that the processor is off while loading a file into Fpcom. You can turn off the processor by selecting “Processor” menu item, and “Proc Off”. Once your file is loaded, turn the processor on using Processor > Proc On.

Flow Performance FPcom

FPcom General Information



A header is loaded into Fpcom

